


REVISION No.	QUANTITY	REVISION OR APPROVAL BASIS	REVISER	APPROVAL	DATE	
<i>CLIENT:</i> <b>OSD SHANGHAI</b>		<i>PROJECT:</i> <b>Company Introduction</b>		<i>DESIGNSTAGE:</i> <b>N/A</b>		
<i>PREPARED BY</i>	<i>DATE</i>	<i>TITLE:</i> <b>Offshore Ship Designers Shanghai Company Profile and Capabilities</b>		<i>DOCUMENT NO.:</i> <b>OS-MR-1007</b>		
Eric Zhang	06. 10 <sup>th</sup> , 2010			<i>REVISION: V7</i>	<i>PAGE 1 OF 11</i>	
<i>CHECKED BY</i>	<i>DATE</i>			 <b>OFFSHORE SHIP DESIGNERS</b> B-308 WorldCenter 18 Tao Lin Road, Pudong Shanghai, 200135, China Tel: +86-21-5851 3412 Fax: +86-21-5851 3739 <b>OFFSHORE SHIP DESIGNERS SHANGHAI</b>		
Daniel Wang	06. 10 <sup>th</sup> , 2010					
<i>APPROVED BY</i>	<i>DATE</i>	<i>DESCRIPTION:</i>				

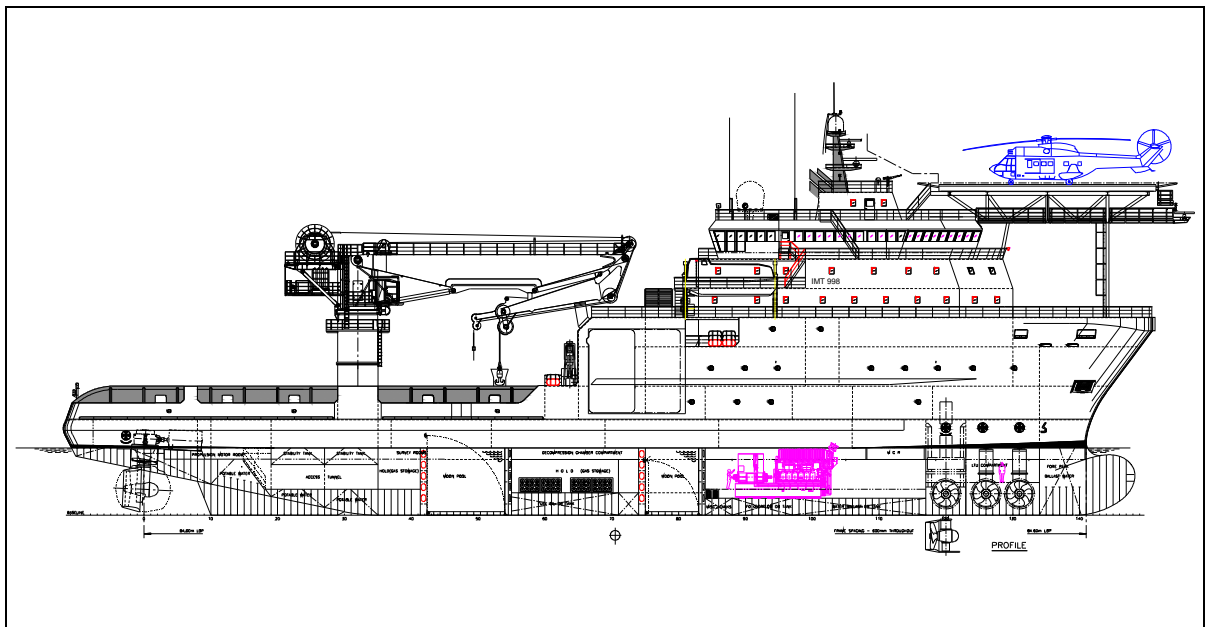
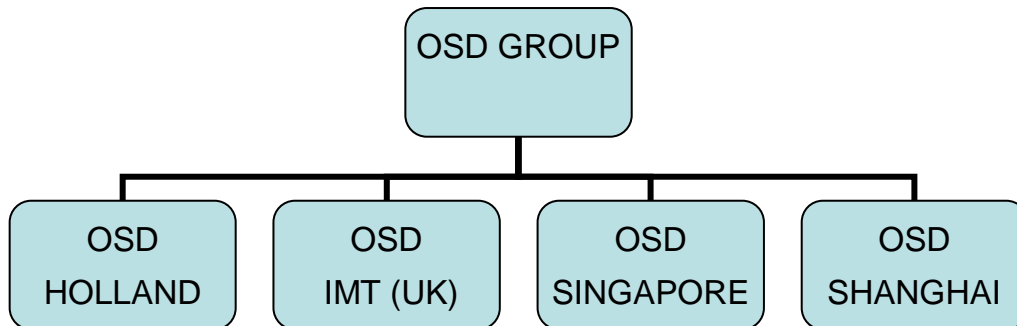
**CONTENT**

<b>1. INTRODUCTION OF OFFSHORE SHIP DESIGNERS GROUP .....</b>	<b>3</b>
<b>2. INTRODUCTION OF OFFSHORE SHIP DESIGNERS SHANGHAI .....</b>	<b>4</b>
<b>3. SERVICES.....</b>	<b>5</b>
3.1 Classification Approval Design/ Updating and Conversion Design .....	5
3.2 Production Design.....	6
3.2.1 3D Modeling.....	6
3.2.2 Workshop Documentation.....	6
3.3 Site Technical Support for Owner and Shipyard.....	9
3.4 Technical/ Business Consultants.....	9
<b>4. CHARACTERS OF OSD SHANGHAI: .....</b>	<b>9</b>
4.1 Technical .....	9
4.2 Staff .....	9
4.3 Facilities and Software .....	9
4.4 High Quality Service in Relatively Lower Costs.....	9
<b>5. EXPERIENCED PROJECTS .....</b>	<b>10</b>
<b>6. CONTACT DETAILS .....</b>	<b>11</b>

**1. Introduction of Offshore Ship Designers Group**

Offshore Ship Designers Group (OSD) is a global one-stop resource delivering naval architecture and marine engineering skills to the shipping and offshore energy industries. It draws on an experienced global workforce to provide high quality feasibility studies, conceptual, detailed designs and production design for tugs and offshore support vessels of all types, as well as cargo vessels. The headquarter of OSD is based in IJmuiden, the Netherlands, and also has offices in Montrose, York, Appledore in UK, Singapore and Shanghai.

OSD Group is consisted of:

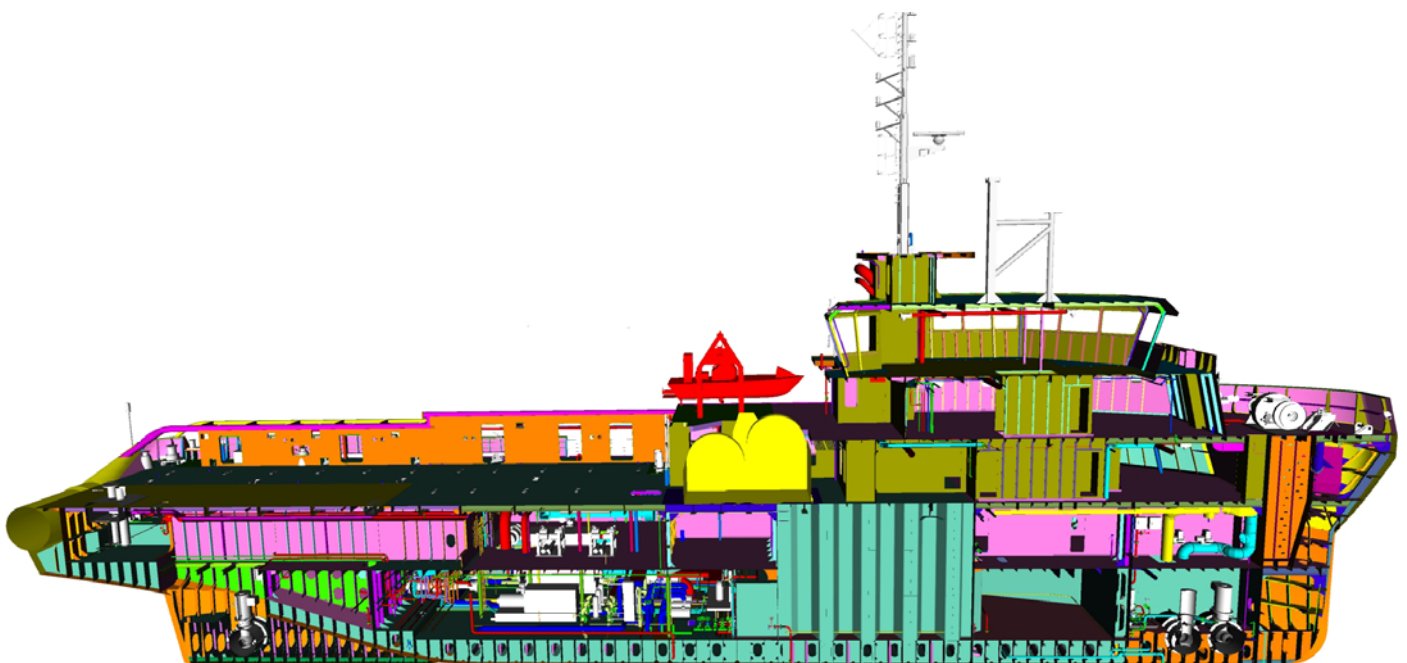
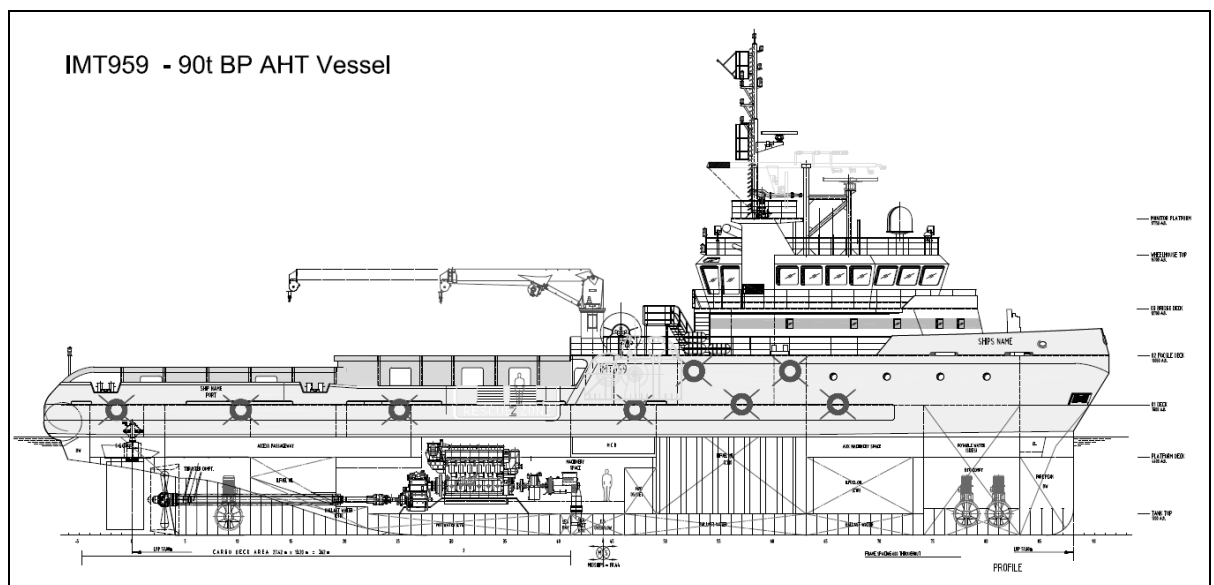




**2. Introduction of Offshore Ship Designers Shanghai**

OSD Shanghai aims at providing Clients professional Classification Approval and production design for offshore and traditional vessels, including new building vessels and upgrade/ conversion projects for existing vessels. Besides the design service, OSD Shanghai is actively involved in site technical support during construction.

This document introduces the activities and services that can be performed by OSD Shanghai.



### 3. Services

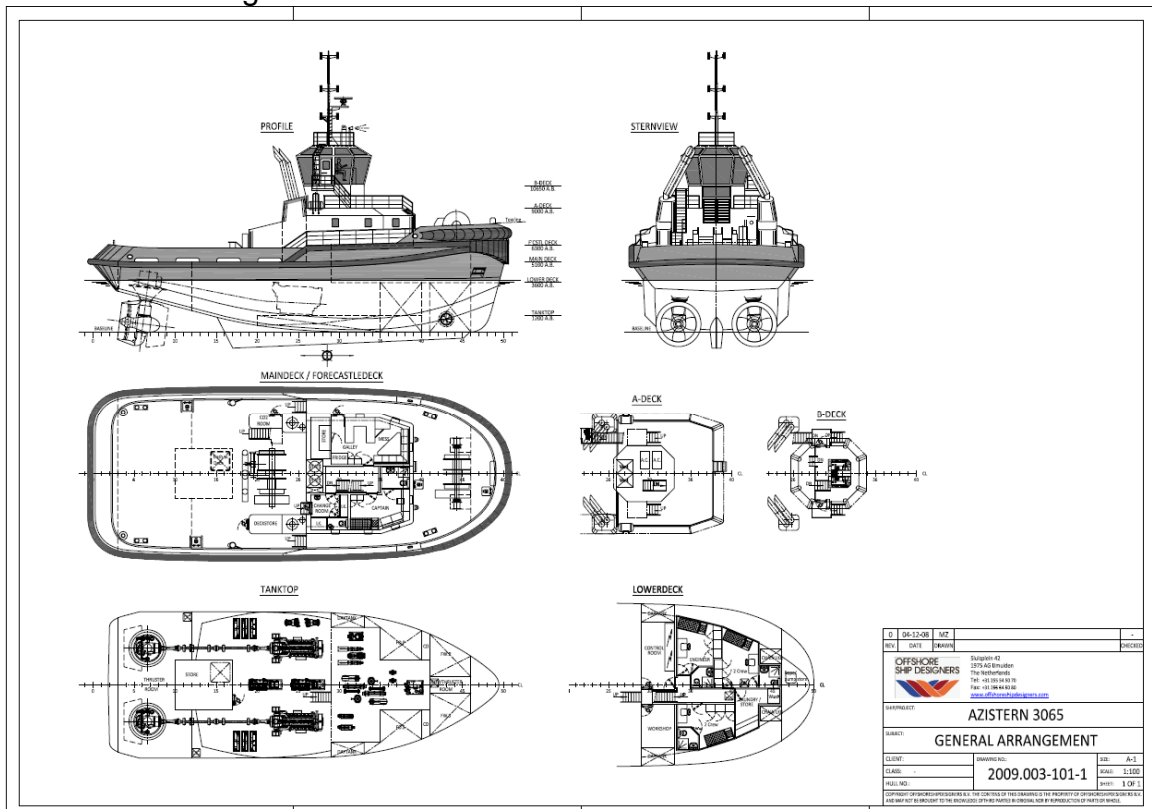
OSD Shanghai provides Clients with following professional service, with holding the critical and innovative design idea of OSD Group, latest requirements from Classification Societies and Marine Organizations, together with fully considering the needs from owner and the actual conditions & technological level of shipyards.

- 1) Production Design
- 2) Classification Approval Design
- 3) Updating and Conversion Design
- 4) Site Technical Support for Owner and Shipyard
- 5) Business Consultants

#### 3.1 **Classification Approval Design/ Updating and Conversion Design**

OSD Shanghai can provide Classification approving design and conversion design as following:

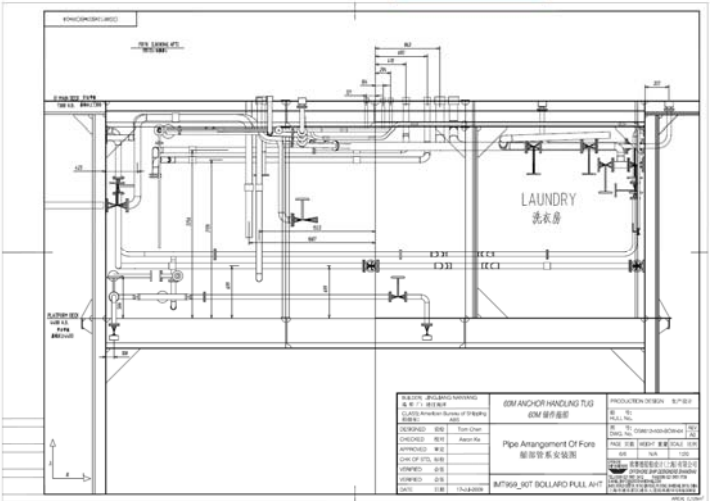
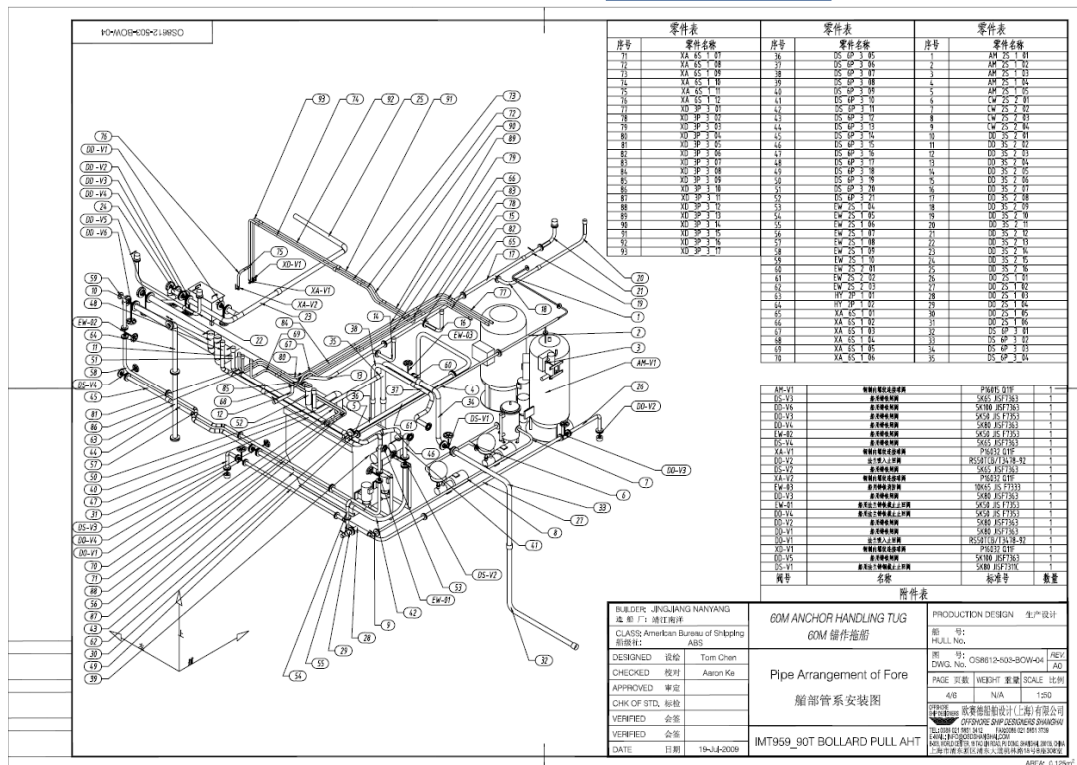
- Main Structure Drawings
- Machinery Layout
- Foundations for Main Equipment
- Piping Diagrams
- Steel Outfitting
- Electrical Diagrams and Calculations



**SIMPLE IS THE BEST: OSD DESIGN\_AZISTERN 3065, 30m@65ton**



- Machinery
  - ✓ Equipment Arrangement and Detail Positioning
  - ✓ Foundation of Equipments
  - ✓ Guidance/Manuals for Important Equipment Installation/Testing
  
- Piping Layout of Systems Including:
  - ✓ Pipe Routings
  - ✓ Penetrations
  - ✓ Bill of Material
  - ✓ Spool/Assembly Drawings

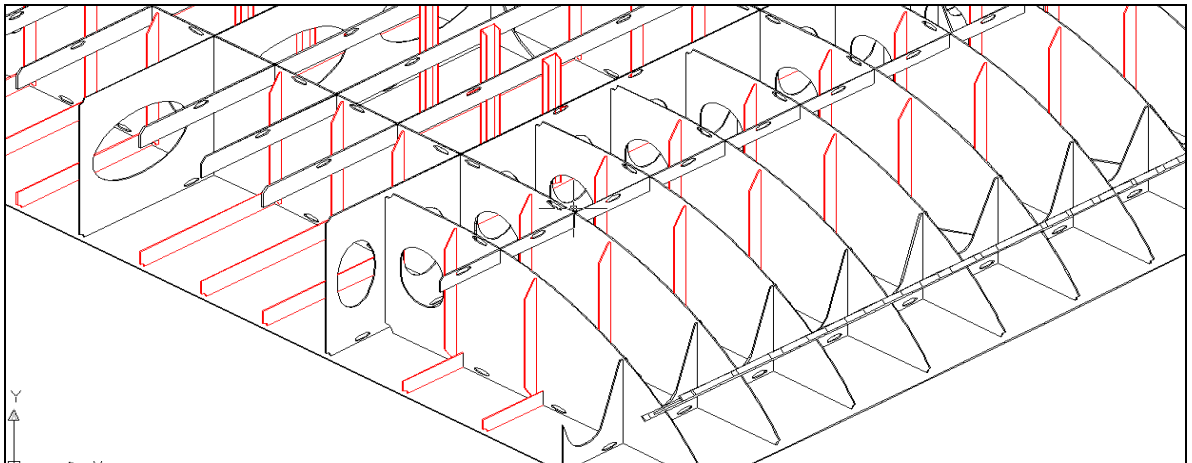





- HVAC  
Including:
  - ✓ Ventilation Duct Routings
  - ✓ Penetrations
  - ✓ Bill of Material
  - ✓ Spool/Assembly Drawings
  
- Internal Outfitting  
Including:
  - ✓ Cabin Arrangement
  - ✓ Lining, Panel and Ceiling Arrangement
  - ✓ Insulation and Deck Covering
  - ✓ Fixing Details
  
- Deck Outfitting  
Including:
  - ✓ Positioning
  - ✓ Foundations
  - ✓ Installation
  - ✓ Co-ordination Drawings
  
- Electrical, Communication and Navigation  
Including:
  - ✓ Equipment Arrangement and Detail Positioning
  - ✓ Connection Diagram of Systems
  - ✓ Main Cable Routings
  - ✓ Cable Tray Layout
  - ✓ Penetrations
  - ✓ Bill of Cable
  - ✓ List of Supports and Fixing

OSD Shanghai processes the production design with 3D structure and pipe/equipment model to help the job of layout and check the interference in between.

OSD Shanghai also may provide the 3D model to client for flying into to check further before real construction.



 <b>OFFSHORE SHIP DESIGNERS</b>	<b>Offshore Ship Designers Shanghai</b> <b>Company Profile and Capabilities</b>		
	OS-MR-1007	REV V7	PAGE 9 OF 11

### 3.3 **Site Technical Support for Owner and Shipyard**

- Technical Support before/during/after Construction or Conversion on site.

### 3.4 **Technical/ Business Consultants**

- Order Consultants
- Cost Estimate
- Feasibility Study
- Yard Selection
- Site Survey

## 4. **Characters of OSD Shanghai:**

### 4.1 **Technical**

OSD Shanghai gets fully technical communication with OSD group as well as the support. Crystallization of decades' classic and Innovative design of OSD Group will become valuable resource for OSD Shanghai, and our Clients.

### 4.2 **Staff**

OSD Shanghai has a team force of 20 people who have quite working experience in designing offshore ships and normal vessels either in design companies and shipyards. The staff is familiar with design and building standard, production procedure and saving items.


OSD Shanghai is ready to provide professional Classification Approval Design and Detail/Production Design with fully consideration and carefulness.

### 4.3 **Facilities and Software**

OSD Shanghai has two offices in Shanghai city in China. She is equipped with following software is ready to offer more efficient and professional service:

- 1) Ship Constructor 2008
- 2) Inventor 2009
- 3) In-House OS CAD V3
- 4) AutoCAD 2008/2009
- 5) AutoShip (in OSD Group)
- 6) AutoHydro (in OSD Group)
- 7) MaxSurf (in OSD Group)
- 8) Rhinoceros (in OSD Group)

### 4.4 **High Quality Service in Relatively Lower Costs**

 <b>OFFSHORE SHIP DESIGNERS</b>	<b>Offshore Ship Designers Shanghai</b> <b>Company Profile and Capabilities</b>		
	OS-MR-1007	REV V7	PAGE 10 OF 11

**5. Experienced Projects**

- 1) Hatch Cover for 2600T BC (Production Design)
- 2) 12000T MPC (Production Design)
- 3) 250M Barge (Conceptual Design)
- 4) Technical Support for 30,000 BC
- 5) Tweendeck Pontoon for 6800 DWT MPC (Classification and Production Design)
- 6) 59M AHT (Production Design)
- 7) 29M TUG (Classification and Production Design)
- 8) 38M TUG (Classification Approval Design)
- 9) 59.25M SSV (Production Design)



**6. Contact Details**

Eric Zhang  
General Manager

***Offshore Ship Designers Shanghai***

Add: B-308, World Center  
18 Tao Lin Road, Pu Dong  
Shanghai, 200135, China

Zip Code: 200135

Tel: 0086-21-5851 3412

Fax: 0086-21-5851 3739

Mobile: 0086 0 134 0212 4490

E-mail: [info@osdshanghai.com](mailto:info@osdshanghai.com)

Web: [www.offshoreshipdesigners.com](http://www.offshoreshipdesigners.com)

